

8"

180 SX102



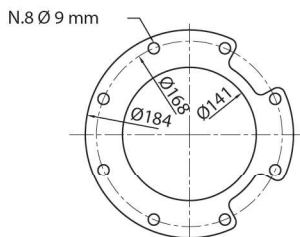
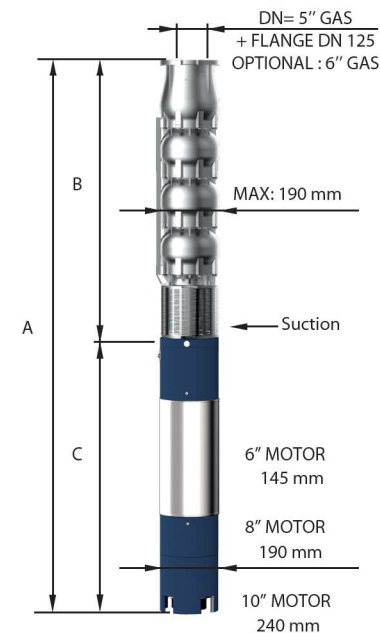
CARATTERISTICHE IDRAULICHE - HYDRAULIC PERFORMANCES

Q= Portata - Capacity - Debit **50 Hz n= 2900 min**

Tipo Type	Power		H(m)	0	1000	1200	1400	1600	1800	2000	2200	2400	
	kW	HP		l/min	l/sec	l/min	l/sec	l/min	l/sec	l/min	l/sec	l/min	l/sec
				m ³ /h	0	60	72	84	96	108	120	132	144
180 SX 102 /1	7,50	10	28	23	22	21	20	19	17	15	13		
180 SX 102 /2	15	20	55	45	44	42	41	38	35	31	26		
180 SX 102 /3	22	30	83	68	65	63	61	57	52	46	38		
180 SX 102 /4	30	40	110	90	87	84	82	76	69	62	51		
180 SX 102 /5	37	50	138	113	109	106	102	96	87	77	64		
180 SX 102 /6	44	60	165	135	131	127	122	115	104	92	77		
180 SX 102 /7	55	75	193	158	153	148	143	134	121	108	90		
180 SX 102 /8	66	90	220	180	174	169	163	153	138	123	102		
180 SX 102 /9	66	90	248	203	196	190	184	172	156	139	115		
180 SX 102 /10	75	100	275	225	218	211	204	191	173	154	128		
180 SX 102 /11	92	125	303	248	240	232	224	210	190	169	141		
180 SX 102 /12	92	125	330	270	262	253	245	229	208	185	154		
180 SX 102 /13	110	150	358	293	283	274	265	248	225	200	166		
180 SX 102 /14	110	150	385	315	305	295	286	267	242	216	179		
180 SX 102 /15	110	150	413	338	327	317	306	287	260	231	192		

DIMENSIONI D'INGOMBRO E PESI - OVERALL DIMENSIONS AND WEIGHTS

Type	A mm Tri V 400	B mm	C mm Tri	M Kg Tri	P Kg
180 SX 102/1	1226	525	701	55	19
180 SX 102/2	1581	650	931	75	26
180 SX 102/3	1846	775	1071	92	33
180 SX 102/4	2151	900	1251	108	40
180 SX 102/5	2366	1025	1341	118	47
180 SX 102/6	2273	1150	1123	178	53
180 SX 102/7	2508	1275	1233	200	60
180 SX 102/8	2703	1400	1303	214	67
180 SX 102/9	2828	1525	1303	214	74
180 SX 102/10	3033	1650	1383	230	81
180 SX 102/11	3358	1775	1583	270	87
180 SX 102/12	3483	1900	1583	270	94
180 SX 102/13	3758	2025	1733	300	101
180 SX 102/14	3883	2150	1733	300	108
180 SX 102/15	4008	2275	1733	300	115



FOR COMMERCIAL TUBE
EXTERNAL DIAMETER: 139,7 mm

n% = Rendimento della pompa
n% = Rendement de la pompe
n% = Pump efficiency
n% = Rendimiento de la bomba

**Max
77%**

kW/st = Assorbimento per stadio
kW/st = Absorption par étage
kW/st = Stage absorption
kW/st = Potencia absorbida por etapa

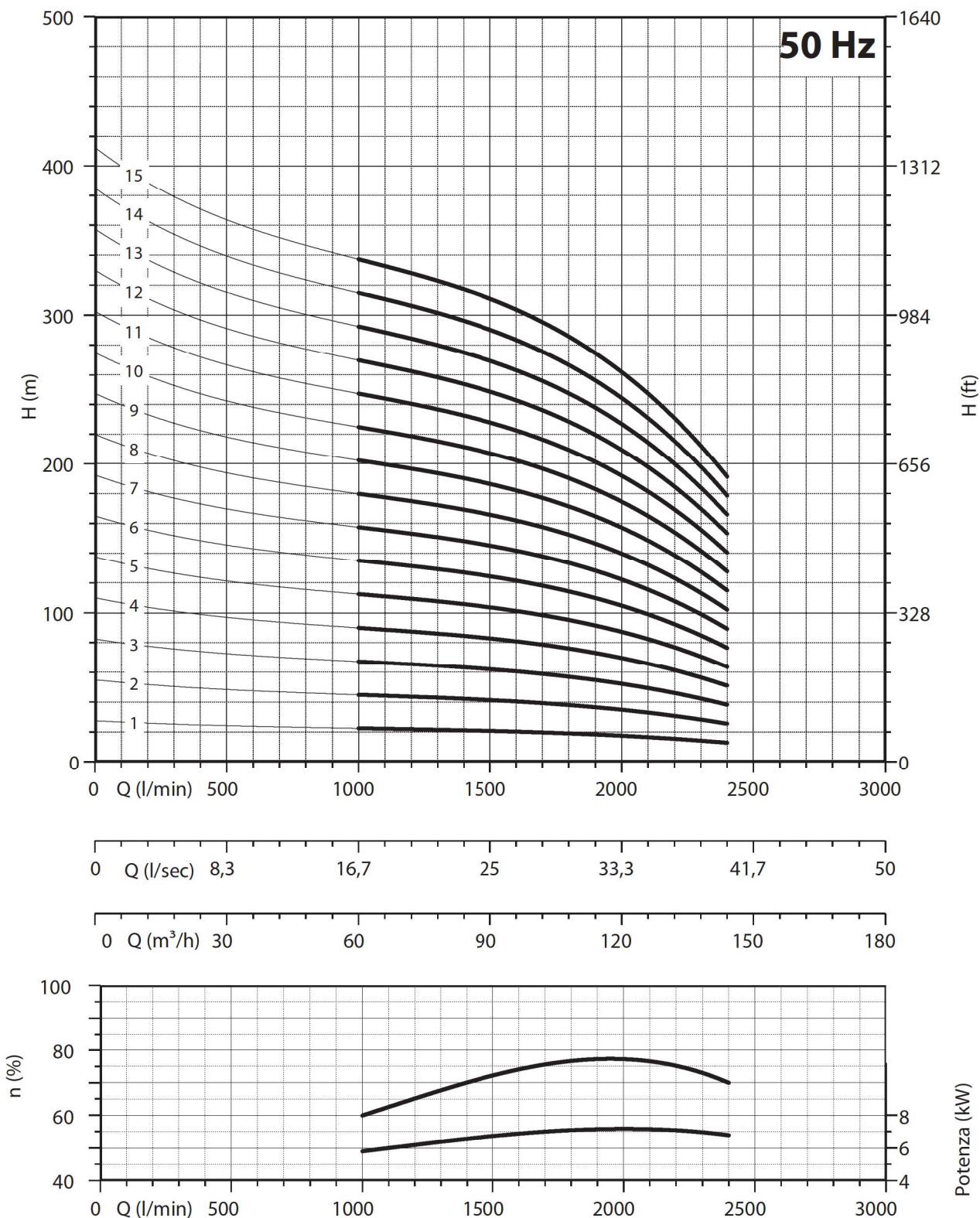
**Max
7,2**

Tolleranza alla sabbia 50 g/m³ - Sand tolerance 50 g/m³ - Compatibilità con acqua potabile DM 174 Drinking water compatibility according to DM 174
Tolleranze secondo UNI ISO 9906 livello 3B - Tolerances according to UNI ISO 9906 grade 3B



8"

180 SX102



NPSH (m)	25%	50%	75%	100%
180 SX 102	2,5	2,9	3,9	7,8